

Historic, Archive Document

Do not assume content reflects current scientific knowledge, policies, or practices.



New and Rare Plants

IN presenting this little booklet offering unusual plants as a supplement to our beautifully illustrated general catalogues, we have two objects in mind:

FIRST, to aid our friends to select, with the least trouble, the *new* and little-known plants that have features of *distinct merit*.

SECOND, during the coming summer we expect to make a thorough revision of our *Hardy Herbaceous Plant Catalogue*. Therefore, because only a few changes could be made in it now, a spring edition could be only a reprint of the old edition.

Probably you have at hand copies of our various publications—*Roses* by Bobbink & Atkins; *Hardy Herbaceous Plants*; *Evergreens*, *Shade Trees*, *Shrubs and Vines*. Each catalogue represents a separate department of our Nursery, therefore when requesting catalogues please indicate what you intend to plant.

For your convenience, a mailing-card is enclosed. If you will check the desired catalogue, sign the card and return to us, the book will be mailed immediately.

BOBBINK & ATKINS, Rutherford, New Jersey



New and Rare Hardy Herbaceous Plants

New outdoor plants are constantly being originated and popular varieties improved. This list is comprised of many new and rare kinds that, on account of their scarcity, have not found a place in current literature and catalogues.

We invite lovers of old-fashioned gardens to inspect our offerings.

ACONITUM. Monksblood. We list these beautiful perennials among rare plants as they are not yet widely enough known. They are important in the border because there is no other plant which blooms at the same time which produces such wonderful tall blue spikes. They are very useful to continue the effect of delphiniums.

A. autumnale. Autumn Monksblood. Flowers blue. 3 to 5 ft. Sept.-Nov. 35 cts. each, \$3 for 10.

A. autumnale Wilsoni. A tall variety from China, with violet-blue flowers. 5 to 6 ft. Sept. 50 cts. each, \$4.50 for 10.

ACHILLEA filipendulina, Parker's Variety. Yar-row. Tall plant with big, clear yellow flower-heads. Prefers a dry location. Very fine for cutting, and may also be dried for winter bouquets. 2½ to 3 ft. June-Sept. 50 cts. each, \$4.50 for 10.

ADONIS amurensis fl.-pl. One of the most attractive early spring-flowering plants, with very large, double, yellow flowers, later turning green, which keep a long time. Wonderful for the rock-garden. 1 ft. April, May. 50 cts. each, \$4.50 for 10, \$40 per 100.

ÆTHEOPAPPUS pulcherrimus (Centaurea pulcherrima). Rose Centaurea. Bushes about 2 to 3 feet tall, bearing numerous pink flowers resembling a cornflower. July. 35 cts. each, \$3 for 10.

AJUGA Brockbanki. Brockbank Bugle. This is the true Brockbanki with brownish green, very attractive foliage and dark blue flowers. Fine for the rock-garden. 6 in. May, June. 35 cts. each, \$3 for 10.

A. reptans fol multicoloris. Produces blue flowers similar to the other varieties. Foliage is an attractive bronze, spotted and veined with yellow, brown and red in great diversity in fall. 6 in. May, June. 50 cts. each, \$4.50 for 10.



Armeria

ALYSSUM montanum. The most beautiful variety of the early Alyssum, with dense yellow flower-heads. Very attractive in the rock-garden. Lower and more prostrate than *A. saxatile*. 6 in. April, May. 50 cts. each, \$4.50 for 10.

ANCHUSA italica, Picotee. Bugloss. This is a new variety of the lovely, well-known Anchusa, with blue and white flowers. 4 to 5 ft. June-Sept. 50 cts. each, \$4.50 for 10.

A. italica, Morning Glory. Strong, branched stems with very dark blue flowers. Free-flowering. 4 to 5 ft. June-Sept. 75 cts. each, \$7 for 10.

ANDROSACE lanuginosa Leichtlini. Rock Jasmine. Very valuable for the rock-garden on account of its gray, silky foliage, forming dense tufts with lovely white flowers, marked with crimson eyes. 6 in. April, May. 50 cts. each, \$4.50 for 10.

ANEMONE hupehensis flore-pleno. A species from central China resembling a miniature *A. japonica* in growth, with double, pale mauve-colored flowers in early August and continuing to late fall. 1 ft. 50 cts. each, \$4.50 for 10.

A. japonica. Windflower. We offer here three new varieties of these delightful late summer and autumn-flowering plants. They will provide welcome variety to those commonly grown.

A. japonica, Buhler Kind. Novelty. A very strong grower with large, double, pure white flowers. 2 to 3 ft. Sept to late fall. 50 cts. each, \$4.50 for 10.

A. japonica, Louise Uhnk. Strong-growing novelty with healthy foliage and large, full, pure white flowers. 2 to 3 ft. Sept. to late fall. 50 cts. each, \$4.50 for 10, \$35 per 100.

A. japonica, Richard Arends. Has exceptionally large, double, white flowers, tinted pink. One of the best introductions. 2 to 3 ft. Sept. to late fall. 50 cts. each, \$4.50 for 10, \$35 per 100.

AQUILEGIA pyrenaica. Columbine. A lovely variety from the Pyrenees Mountains. Produces an abundance of blue flowers with golden centers. Excellent for the rock-garden. 10 to 12 in. May, June. 50 cts. each, \$4.50 for 10.

ARMERIA cephalotes, Bees' Ruby. Thrift. A very fine improvement on *A. cephalotes*, with very long stems and large flower-heads of brilliant pink. The finest Armeria for border and for cutting. 1½ to 2 ft. June, July. 75 cts. each, \$7 for 10.

ASTER alpinus, Nancy Perry. An improvement on *A. alpinus*, with larger, rounder flowers of very light blue. An excellent border and rock-garden plant. 1 to 1½ ft. Blooms freely in May and June. 50 cts. each, \$4.50 for 10.

A. alpinus ruber. Large, rosy red flowers, with orange-yellow disc. 5 to 10 in. May, June. 30 cts. each, \$2 for 10.

A. cordifolius, Star-Shower. Branching habit with fine, small white flowers. Good for cutting, especially as filling material in bouquets like gypsophila. 3 to 4 ft. Sept., Oct. 50 cts. each, \$4.50 for 10, \$35 per 100.



Aster hybrida, Countess. A new, beautiful pink variety, whose color surpasses all others. 4 ft. Sept., Oct. 50 cts. each, \$4.50 for 10.

A. hybrida, Wonder of Staefa. This variety grows about 3 to 3½ feet high, with sky-blue flowers about 3 inches in diameter continually from June until heavy frosts in fall. A very good cut-flower. 75 cts. each, \$7 for 10.

A. Lutetia. A rare variety with pretty lilac-rose flowers about 2½ inches in diameter. 2 ft. Aug.-Oct. 50 cts. each, \$4.50 for 10, \$35 per 100.

A. novæ-angliæ, Barr's Pink. One of the best of the pinks, similar to Lil Fardel and Rycroft Pink, but flowers larger. 4 to 5 ft. Sept., Oct. 50 cts. each, \$4.50 for 10.

A. novi-belgi, Lady Grey. Large, semi-double flowers of an exquisite shade of opal-grey. Very beautiful. 3 to 4 ft. Sept., Oct. 30 cts. each, \$2 for 10, \$18 per 100.

A. novi-belgi, October Dawn. Large flowers of a pretty shade of lilac and mauve. Pyramidal growth. 2 to 3 ft. Sept., Oct. 50 cts. each, \$4.50 for 10.

A. novi-belgi, Queen Mary. Rich, glistening blue. This is a splendid, effective flower of real value for cutting. Compact grower. A very fine addition to the Novi-belgi type. 2½ ft. Sept., Oct. 50 cts. each, \$4.50 for 10.

ASTILBE Arendsi, Freule van den Bosch. *Spirea.* Splendid novelty. Compact flower-spikes of dark pink. 3½ ft. 75 cts. each, \$7 for 10.

A. Arendsi, Gruno. Light, graceful spikes of splendid salmon-pink. 4 ft. 75 cts. each, \$7 for 10.

A. Arendsi, Prof. van der Wielen. Gigantic, long stems and side shoots, showing fine, small, white flowers in profusion. 75 cts. each, \$7 for 10.

A. grandis rosea magnifica. Large, pure pink flowers. 4 ft. Late July. 50 cts. each, \$4.50 for 10.

BUDDLEIA Davidi, Pink Pearl. *Butterfly Bush.* A fine new shrub, with many large spikes of pale lavender-pink flowers having distinct orange centers. Forms tall bushes like the other Buddleias. Fine for cutting. 6 to 10 ft. July-Sept. \$1.50 each.

B. Davidi superba. An exceptionally beautiful variety with distinct, deep blue-lilac flowers in spikes much longer than ordinary kinds, and very full and more uniform. 75 cts. each, \$7 for 10, \$65 per 100.

CAMPANULA carpatica turbinata hybrida. *Carpathian Bellflower.* Similar to the well-known *Campanula carpatica*, with larger, erect, cup-shaped, blue flowers. 6 in. June, July. 35 cts. each, \$3 for 10.

C. persicifolia, Lavender Queen. *Peachleaf Bellflower.* Large flowers of lovely lavender-blue. Excellent in the border and for cutting. 2 to 2½ ft. June, July. 50 cts. each, \$4.50 for 10.

C. persicifolia Moerheime. One of the finest *Persicifolia* hybrids, with much larger, double, white flowers. Produces stately stems about 2 to 2½ feet high. Very fine for cutting. June, July. 50 cts. each, \$4.50 for 10.

C. persicifolia, Telham Beauty. One of the best introductions of late years. With its single, rich blue, large, bell-shaped flowers, this variety is a most beautiful and attractive plant for the perennial border. Excellent for cutting. 2 to 2½ ft. June, July. 75 cts. each, \$7 for 10.

C. persicifolia, Telham Beauty Alba. A white form of the above. 50 cts. each, \$4.50 for 10.

C. Portenschlagiana (muralis). *Dalmatian Bellflower.* Dense carpet of foliage 3 to 5 inches high in sunny position; dark blue flowers. Fine for rocky and walls. May, June. 50 cts. each, \$4.50 for 10.

CHRYSANTHEMUM coreanum. *Korean Chrysanthemum.* A new Chinese variety with large, single white flowers having yellow centers. Fine for cutting. 1½ to 2 ft. Oct. 35 cts. each, \$3 for 10, \$25 per 100.

C. morifolium. *Mulberry Chrysanthemum.* This variety came from Tibet, and we think it is one of the most beautiful single Chrysanthemums. It is a very low grower, with a profusion of lovely, single pink flowers. Can be used for the rock-garden very effectively. 1 ft. Oct. 2½-in. pot plants, 50 cts. each, \$4.50 for 10, \$35 per 100.

C., Mrs. Calvin Coolidge. A single variety with large, very beautiful, rich, mahogany-red flowers freely produced. 50 cts. each, \$4.50 for 10.

CIMICIFUGA racemosa simplex. *Kamchatka Bugbane.* This little-known plant should not be overlooked by any garden-lover, as it is, without doubt, one of the most beautiful attractions of the perennial border. The dense spikes of feathery white flowers are borne on tall, graceful stems 3 to 4 feet high, making them excellent for cutting and ideal material for vases. The plant grows best in a half-shady location. 75 cts. each, \$7 for 10, \$65 per 100.

DELPHINIUM. *Larkspur.* The demand for better Delphiniums is growing every year, and we take great pleasure in offering the latest novelties hybridized by well-known English and European houses. We feel certain that garden-lovers will welcome this opportunity to obtain these best and newest distinctive types on the market. Their richness and nuances of color, and long spikes are unequalled. Each and every one of them is a superb creation.

Latest Novelties

Blue Queen. Azure-blue with blackish brown center. Single flowers and handsome spikes. 4 ft. tall. \$2 each.

Countess Cowley. Light blue and mauve, semi-double flowers of wonderfully fine form; eye black. Magnificent spikes. 5 ft. \$3.50 each.

Edward Bromet. The purplish blue ground is very rich and the white eye extremely large. Individual flowers are of immense size and are set on enormous spikes. \$3.50 each.

Glory. Mauve, shaded rose; white eye. Stout, sturdy plant. \$2 each.

Great Strides. Pale blue, shaded pinkish mauve; prominent white eye. One of the most outstanding varieties. \$3.50 each.

Happy Thought. Medium blue, shaded pansy-violet. 5 ft. \$3.50 each.

Mrs. A. J. Watson. Deep mauve shade with black center; enormous spikes. 7 ft. \$2.50 each.

Mrs. Shirley. Beautiful variety. Lovely lilac-mauve; white and sulphur eye. \$2.50 each.

Mrs. Townley-Parker. Sky-blue; single; white eye. \$2 each.

Purple King. Large, deep blue and purple, semi-double flowers; eye black and gold. Shapely spike. 5 ft. \$2.50 each.

R. A. Pilkington. Extra-large, well-formed, semi-double flowers of rich violet, edged dark blue; eye brown. Spike is well-formed. 5 ft. \$3.50 each.

The Bishop. Bright royal blue; large and conspicuous white center. An outstanding variety. 5 ft. \$3.50 each.



Funkia minor alba

Wrexham Strain or Hollyhock Delphiniums

This remarkable strain, originated by Mr. Watkins Samuel, Wrexham, England, produces spikes and flowers of unusual size. The name Hollyhock Delphinium was created by visitors who upon seeing these plants exclaimed, "They are like Hollyhocks!" Mixed Colors, Single and Double, \$2 each, \$17.50 for 10, \$150 per 100.

Extra-Fine Delphiniums in Finest Shades

- | | |
|---------------------|--------------|
| Light Shades | Dark Shades |
| Mauve Shades | Mixed Shades |
| Intermediate Shades | |

\$1.25 each, \$11.50 for 10, \$100 per 100

DIANTHUS arveniensis. Pink. Forms dense tufts on which appear small pink flowers. A very good variety for the rock-garden. 4 in. May-July. 35 cts. each, \$3 for 10.

DORONICUM magnificum. Sunflower Leopard's-Bane. Early spring-flowering plants with large, yellow, daisy-like flowers on stiff stems. Useful for cut-flowers. 1½ to 2 ft. May, June. 35 cts. each, \$3 for 10.

D., Miss Mason. Novelty. A very strong grower, producing flower-stems 2 feet high and more, with large, yellow, daisy-like flowers. May, June. 50 cts. each, \$4.50 for 10.

DRABA fladnizensis. Arctic Whilow Grass. This little rock-plant, with white flowers in spring, is excellent for the rock-garden and should be used more extensively. Forms dense carpets and is wonderful for planting in pockets. 35 cts. each, \$3 for 10, \$25 per 100.

DRYAS Sundermani. A dwarf, tufted, evergreen, shrubby plant with cream-white, anemone-like flowers. It likes a well-drained soil and a sunny but not too dry location. Creeping. 6 in. May, June. 50 cts. each, \$4.50 for 10.

EPIMEDIUM. Barrenwort. A most interesting group of hardy plants with very pretty foliage and lovely flowers. Does well in a half-shady or shady position. It is very effective in the rock-garden and a wonderful ground-cover. Can easily be forced in early spring. 9 in. April, May.

- E. bicolorum. Rosy brown.
- E. lilacea. Beautiful lilac flowers.
- E. macranthum. Flowers cream-white, waxy, similar to an orchid.
- E. macranthum niveum. Snow-white flowers. 35 cts. each, \$3 for 10, \$25 per 100.
- E. macranthum rubrum. Like above, but with reddish flowers.
- E. pinnatum elegans. Yellow flowers.
- E. sulphureum. Dwarf. Pale yellow flowers. Suitable for shady situation in rock-garden or border. 50 cts. each, \$4.50 for 10, \$40 per 100, unless noted

ERICA (Calluna) vulgaris flore-pleno. Double-flowering form of the Scotch Heather and an improvement of the single variety. Flowers and growth like E. vulgaris. 75 cts. each, \$7 for 10, \$65 per 100.

EREMURUS himalaicus. Desert Candle. A wonderful perennial from Asia, mostly used as a specimen plant or in large borders. It has majestic white flower-spikes and stalks growing from 6 to 8 feet high. We consider it one of the most striking plants in large gardens. It should be planted in rich, moist, but well-drained soil. A cover of leaves should be given in fall, and in spring it is advisable to protect the flower-stalks against late frost. When planting, spread the roots out horizontally and place the eye only about 1 inch below the surface of the soil. \$5 each.

ERIGERON hybrida, Asa Gray. Fleabane. One of the best hardy border plants, suggesting the native asters, but blooming much earlier. Flowers pale orange—a peculiar, striking color—on 2-foot stems. June, July. 75 cts. each, \$7 for 10.

ERYNGIUM aquaticum (yuccæfolium). Button Snakeroot. Heads of white flowers and yucca-like foliage. 2½ to 3 ft. 30 cts. each, \$2 for 10, \$18 per 100.

FUNKIA (Hosta) minor alba. Plantain Lily. Produces spikes of medium-sized, bell-shaped, white flowers. An excellent perennial, being very floriferous and more dainty in appearance than the older varieties of Funkia. A fine edging plant. 1 to 1½ ft. July. See illustration. 50 cts. each, \$4.50 for 10.

GAILLARDIA, Lady Rolleston. A pure yellow variety with big, showy flowers. Presents a striking color effect when planted in the border. Fine for cutting. 1½ ft. May-Nov. 75 cts. each, \$7 for 10.

G., Tangerine. This variety is different from other Gaillardias. Instead of having the strong, contrasting colors of red and yellow, it has good-sized flowers, about 2 inches in diameter, with very pretty bright orange petals gradually changing to a deep reddish orange toward the center. 1½ to 2 ft. Blooms all summer. 75 cts. each, \$7 for 10.



Geum sibiricum

GERANIUM ibericum platypetalum. *Iberian Cranesbill.* A robust plant about 1½ to 2 feet high, with especially beautiful lilac and pastel blue flowers. Very rare and remarkable color. June, July. 50 cts. each, \$4.50 for 10, \$35 per 100.

GEUM bulgaricum. *Bulgarian Avens.* (New.) Very large, beautiful, orange-gold flowers. It grows very bushy, does well on moist slopes in rock-gardens, and flowers from end of April to September. 1 ft. 50 cts. each, \$4.50 for 10.

G., Fire Opal. A very large, semi-double variety with glowing scarlet flowers having a deep orange sheen, and undulating petals, borne on high stems. A novelty of great merit. 2 ft. June, July. 75 cts. each, \$7 for 10.

G., Lady Hillingdon. Large, golden yellow flowers, produced very freely all summer. 1 ft. 50 cts. each, \$4.50 for 10.

G., Orange Man. A distinct, single, orange flower, about 1½ inches in diameter, with strong spikes nearly 2 feet high. May, June. 75c. each, \$7 for 10.

G., Princess Juliana. A splendid new hybrid, with large, double, pure orange flowers on 2-foot stems. June, July. 75 cts. each, \$7 for 10.

G. sibiricum. Orange-red. Its color is not surpassed by any other spring flower. A very showy plant for the rock-garden. 12 to 15 in. April-June. See illustration. 35 cts. each, \$3 for 10, \$25 per 100.

GYPSOPHILA, Bristol Fairy. This double-flowering *Baby's Breath* has larger white flowers than the old *G. paniculata fl.-pl.* An excellent cut-flower. 2 to 3 ft. All summer. 75 cts. each, \$7 for 10, \$65 per 100.

G. Ehrlei. A new double *Gypsophila*. Very free-flowering. Fine for cutting. 2 to 3 ft. Summer. 75 cts. each, \$7 for 10, \$65 per 100.

HELENIUM autumnale pumilum magnificum. *Snee-weed.* Produces a great number of clear golden yellow flowers on strong, upright bushes. 2½ ft. June, July. 75 cts. each, \$7 for 10.

H. Bigelovi aurantiacum. A new variety which grows 2½ feet high. It is wonderful as a border plant, producing its golden yellow flowers in June and July. 75 cts. each, \$7 for 10.

H., Crimson Beauty. (New.) A striking hybrid variety with bronze-carmine flowers. Grows only 2 feet high and therefore is excellent for borders. June, July. 75 cts. each, \$7 for 10.

HELIANTHEMUM, Double Orange. *Sun Rose.* Creeping plant with dark green foliage, especially useful for the rock-garden. An easy-growing and profusely blooming variety with double, bright orange flowers. 3 to 4 in. June, July. 35 cts. each, \$3 for 10, \$25 per 100.

HELIOPSIS scabra formosa. A new *Heliopsis* with bright yellow, almost double flowers in the shape of a cactus dahlia, and similar to our well-known *Golden Glow*. Grows about 2 to 2½ feet high and may be called a dwarf *Golden Glow*. Fine for border planting, and at the same time excellent for cutting. Aug.-Oct. 75 cts. each, \$7 for 10.

H. scabra gratissima. A good ochre-yellow variety with flowers like wild sunflowers. 2½ ft. July, Aug. 75 cts. each, \$7 for 10.

HELLEBORUS niger. *Hellebore; Christmas Rose.* Large, white, solitary flowers, sometimes flushed with purple. Excellent in rocky places. Leaves evergreen. Easily forced. 1 ft. Natural blooming period, Dec.-March. \$1.50 each, \$12.50 for 10.

H. Hybrids. Similar to *H. niger*. Robust growers. Flowers in various colors. \$1 each, \$9 for 10.



Gaillardia, Tangerine. See page 4



HEUCHERA. *Alum-root.* Bushy plants of easy culture bearing loose, graceful spikes of flowers in great profusion. Dwarf grower of a compact habit. It is fine for the border and rocky and excellent for cutting. Forces well in the greenhouse in early spring.

Heuchera, Cascade. (New.) A very strong grower with light pink flowers similar to *H. brizoides*. Flower-stems over 2 feet high. Very attractive begonia-like foliage. June, July. 50 cts. each, \$4.50 for 10, \$35 per 100.

H., Edge Hall. (New.) One of the best pink Heucheras with large, flesh-pink bells and prominent yellow stamens. A very fine variety. 1 ft. June, July. 50 cts. each, \$4.50 for 10, \$35 per 100.

H. Rosmondi. Pleasing coral-pink flowers on stems about 1 to 1½ feet tall. A very good pink variety. June, July. 50 cts. each, \$4.50 for 10, \$35 per 100.

H., Sanglant. (New.) Flowers bright red—a very brilliant color. Good grower. 1 to 1½ ft. June, July. 50 cts. each, \$4.50 for 10, \$35 per 100.

H., Saturnale. (New.) The darkest of all Heucheras. Flowers wine-red. Nice large foliage; growth more compact than the other varieties. A beautiful novelty. 1 to 1½ ft. June, July. 50 cts. each, \$4.50 for 10, \$35 per 100.

H., Virginal. A pure white Heuchera with many-flowered sprays about 1 foot long. June, July. 50 cts. each, \$4.50 for 10, \$35 per 100.

HYPERICUM fragile. *St. John's-wort.* A very good plant for the rock-garden. Has fine, attractive leaves and yellow flowers. 1 ft. July, Aug. 50 cts. each, \$4.50 for 10, \$40 per 100.

IBERIS, Snowflake. *Candytuft.* The most beautiful of all Iberis. Forms large cushions with an abundance of wonderful, pure white flower-heads. Indispensable for the rock-garden and a wonderful border plant. There is no better Iberis on the market. 2 ft. April, May. 50 cts. each, \$4.50 for 10, \$40 per 100.



Heliothis scabra formosa. See page 5

IRIS sibirica, Perry's Blue. This beautiful hybrid of *I. sibirica* deserves to be known better. It has large, clear blue flowers on stiff stalks, extra-fine for cutting. A splendid grower. 50 cts. each, \$4.50 for 10, \$35 per 100.

LAVANDULA, Munstead Variety. *Lavender.* (New.) Quite an improvement over the old variety, being more decorative and a much better grower. 50 cts. each, \$4.50 for 10.

LITHOSPERMUM, Heavenly Blue. *Gromwell.* Splendid flowers of sky-blue color. Fine for the rock-garden. 4 in. June–Sept. 75 cts. each, \$7 for 10.

LUPINUS, New Hybrids. *Lupines.* This is an English strain of exquisite colors, showing a wonderful improvement over old varieties. They compare favorably with the finest snapdragons and make a beautiful showing in the perennial border. They form vigorous spikes of exquisite colors in the following shades: Bronze, yellow, orange, pink, lavender, dark brown, and blue-lavender. 2½ to 3½ ft. June–Aug. 50 cts. each, \$4.50 for 10, \$40 per 100, mixed only.

MENZIESIA (Dabœcia) polifolia. Usually planted with heather. Dark green, glossy leaves and spikes of large, drooping, purple bell-shaped flowers. 1½ ft. July–Oct. 50 cts. each, \$4.50 for 10.

OROBUS roseus pallidus. *Bitter Vetch.* Grows about 2 to 3 feet high and produces rose-pink, pea-shaped flowers. Prefers half-shady location. July. 35 cts. each, \$3 for 10, \$25 per 100.

Papaver . Poppy

The perennial Poppies rank among the most popular flowers in cultivation. For this reason, they should be used more freely in perennial borders, closely surrounded by other perennial plants, or planted in solid beds of mixed annuals, since the foliage of Poppies dies down after the flowering season.

Their flowers are brightly colored, cup-shaped, and borne on long, graceful swaying stems.

Papaver alpinum. *Alpine Poppy.* This beautiful alpine plant blooms profusely all summer in bright colors. It is excellent for the rockery. 8 in. 50 cts. each, \$4.50 for 10.

P. thibetica, Yellow. This strain was imported from Tibet. The gorgeous yellow flower is twice as large as *Papaver nudicaule* and is borne on stiff stems nearly 2 feet high. Flowers without cessation during the entire summer. 50 cts. each, \$4.50 for 10, \$35 per 100.

Oriental Poppies

Oriental Poppies, of which varieties are offered below, produce the largest and most striking flowers in the family. They are perfectly hardy and very permanent if protected in severe winters with a light covering of leaves.

Papaver orientale, E. A. Bowles. Delicate shade of apricot, changing to shell-pink. 50 cts. each, \$4.50 for 10, \$35 per 100.

P. orientale, Joyce. One of the finest Poppies. Of unique old-rose color and a very good grower. 2½ to 3 ft. May, June. 50 cts. each, \$4.50 for 10, \$35 per 100.



Phlox, Arendsi Hybrids

Papaver orientale, Mahogany. Darkest of the Oriental Poppies. The large flowers are deep carmine-purple—almost like the color of mahogany wood. A very odd variety. 2½ ft. May, June. 50 cts. each, \$4.50 for 10.

P. orientale, Perry's White. Purest white. 50 cts.

P. orientale, Princess Ena. Salmon-pink, with orange blotches. Fine bloomer and good grower. 50 cts. each.

P. orientale, Tulipa. A beautiful upright grower with stiff stems and cup-shaped flowers of a striking shade of orange-pink. An exceptionally good variety. 50 cts. each, \$4.50 for 10, \$35 per 100.

P. orientale atrosanguineum maximum and *Grossfurst*. These are both old varieties, but we consider them still the best in their shades. *Atrosanguineum maximum* is a dark carmine-blood-red and *Grossfurst* a real red. There seemed to be little or no stock left on the market, and we have taken great pains to work up a new supply of these two beautiful varieties. We can now offer them again. 50 cts. each, \$4.50 for 10.

PETASITES japonica gigantea. *Japanese Giant Butterbur*. Very effective foliage plant for moist spots. Leaves sometimes get as large as 2 to 3 feet in diameter. 3 to 4 ft. \$1 each, \$9 for 10.

Phlox Arendsi Hybrids

These Phloxes are hybrids between *Canadensis* and *Decussata*. They flower early in spring, and, when cut back several times during the summer, they will continue to flower until late fall. This "Everblooming Phlox" is a worthy asset to any border, being very floriferous, and, on account of its medium height (about 1 foot) and spreading nature, very useful for edging along herbaceous borders or in solid beds of one color, to create a magnificent mass effect. Our illustration pictures both these features.

Charlotte. Pale pinkish lilac, with purplish eye. 75 cts. each, \$7 for 10.

Emmy. Lilac with dark lilac eye. 75 cts. each, \$7 for 10.

Hanna. Bright pink with a purple sheen. 75 cts. each, \$7 for 10.

Hilda. White, suffused with lilac; pink eye. 75 cts. each, \$7 for 10.

Louise. Pale lilac with a light carmine eye. 50 cts. each, \$4.50 for 10.

Marianna. Dark bluish violet. 75 cts. each, \$7 for 10.

Phlox maculata, Alpha

A novelty of the greatest merit. Entirely different from any Phlox now on the market. The flower-spikes are long instead of a truss, and very pyramidal, about one-third the total height, which can be clearly seen in our illustration on page 8. The flowers are of a brilliant pink color. Very beautiful. 75 cts. each, \$7 for 10.

Phlox decussata

Phlox are very showy and extremely useful hardy plants. They deserve a prominent position in every garden, since they thrive in most soils. A rich loam is most desirable. The flower-bed should be deeply spaded and manured previous to planting. By growing a complete collection of Phlox—do not plant less than five of each variety, otherwise the effective coloring of mass planting will be lost—a continuity of bloom can be had from early June until late fall. 2 to 3 ft.

Latest Novelties

Brilliant. An outstanding new Phlox because of its beautiful scarlet color with deeper eye. Large trusses and very floriferous. Aug. 50 cts. each, \$4.50 for 10.

Caroline Vandenberg. The bluest Phlox of all—a very beautiful, striking color. Large trusses and a free bloomer. Medium height. 50 cts. each, \$4.50 for 10.

Evangeline. A very rich salmon-pink, similar to Elizabeth Campbell. 50 cts. each, \$4.50 for 10.



Phlox maculata, Alpha See p. 7



LATEST PHLOX NOVELTIES, continued

H. B. May. A very beautiful, clear pink variety with extremely large trusses and gigantic pips. A good, robust grower. 50 cts. each, \$4.50 for 10.

Karl Foerster. One of the latest and best novelties. The very large flowers are an exceptionally glowing dark orange-red. A worthy improvement over Deutschland. 50 cts. each, \$4.50 for 10.

Leo Schlageter. A very strong, healthy-growing novelty with large, pyramidal trusses of brilliant scarlet-carmine flowers having a darker center. 50 cts. each, \$4.50 for 10.

Margaret Gavin Jones. An improved variety with large pink flowers and a bright carmine eye. A very beautiful novelty of great merit. 50 cts. each, \$4.50 for 10.

Paul Hoffman. Dark green foliage; flowers of a particular carmine color with darker center. 50 cts. each, \$4.50 for 10.

Morgenrood. Blooms a very striking red—certainly an excellent addition to this color class. Free-flowering. Medium height. 50c. each, \$4.50 for 10.

Professor Went. One of the most striking shades of brilliant amaranth. The flowers are borne on strong stems which need no support. 50 cts. each, \$4.50 for 10.

Selma. Large trusses of very beautiful pink flowers with cherry-red eyes. Very good grower. 50 cts. each, \$4.50 for 10.

Phlox subulata • Moss Pink

This type of Phlox is of a creeping nature and mostly used in rock-gardens, for covering banks, edging, etc.

G. F. Wilson. An excellent rock-plant with soft lavender flowers. 3 to 6 in. April, May. 35 cts. each, \$3 for 10.

PHLOX SUBULATA, continued

Nelsoni. Grows more tuftlike and less rank than Subulata Alba. For this reason the best white variety for rock-gardens. 3 to 6 in. April, May. 35 cts. each, \$3 for 10.

The Bride. White with distinct red center. Very attractive. 3 to 6 in. April, May. 35 cts. each, \$3 for 10.

PHYSALIS. Well known under the name of Chinese Lantern Plants on account of their bright orange-scarlet, lantern-like fruits, which are fine for cutting and when dried are extensively used for floral decorations. We can offer two new varieties:

P. Alkekengi. *Strawberry Ground Cherry.* A smaller variety than the common *P. Francheti* and flowers earlier. 1 to 2 ft. 50 cts. each, \$4.50 for 10, \$35 per 100.

P. Bunyardi. This variety produces fruit in abundance and grows somewhat taller than *P. Alkekengi*. Especially decorative on account of its numerous glowing red pods. 3 ft. 50 cts. each, \$4.50 for 10, \$35 per 100.

PLATYCODON, Double Blue. *Double Balloon-flower.* Very rare. Free-flowering perennials of erect habit. The balloon-shaped buds are interesting and almost as attractive as the star-shaped, double, clear blue flowers. One of the most beautiful plants of the garden. 2 ft. July. 75 cts. each, \$6.50 for 10.

P., Double White. A white form of the above variety. 2 ft. July. 50 cts. each, \$4.50 for 10.

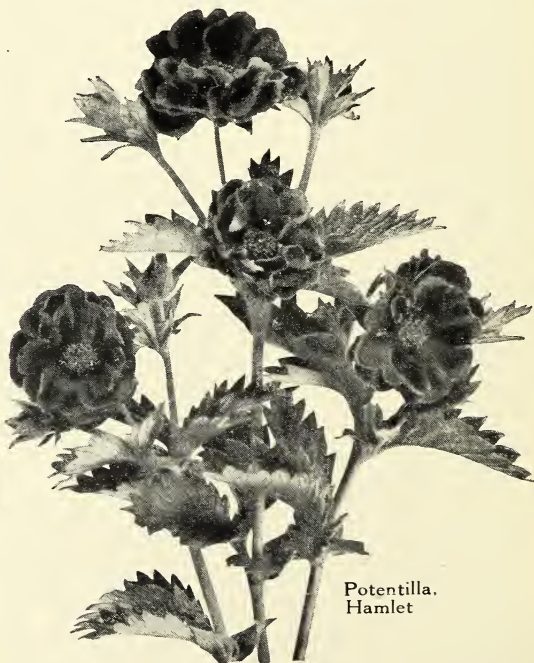
POTENTILLA Hybrids. Cinquefoil. The double-flowering hybrids are interesting and attractive plants for the border. They should be used more frequently as they are easy growers and produce large, double flowers in great profusion, beginning in July. Very fine for cutting and the flowers keep nearly a week.

P., Carnival. Orange-red, tinted yellow. Double.

P., Emilia. Purple-red, edged yellow.

P., Fairy Queen. Clear yellow. Double.

P., Hamlet. Dark crimson. Double.



Potentilla Hamlet



Potentilla Hybrid, L'Acheron. Dark red and yellow, striped red. Double.

P., Panorama. Orange, striped. Double.

P., Van Dyck. Yellow, striped red. Double.

P., Verna nana. This low-growing *Potentilla* is a splendid rock-garden plant, forming dense tufts of fine-cut leaves and bearing large, rich yellow flowers. 2 in. April, May. 75 cts. each, \$7 for 10.

P., Vulcan. Bright red, with dark center.

P., Yellow Queen. A very good, double yellow variety.

All varieties, 50 cts. each, \$4.50 for 10, except as noted

POTERIUM obtusum. *Japanese Burnet.* The light pink flowers are borne on graceful stems and hang over the light green foliage like pink ears. Heavy bushes. 2 to 2½ ft. June, July. 35 cts. each, \$3 for 10.

PULMONARIA angustifolia azurea. *Azure Lungwort.* This is the prettiest *Lungwort*, with attractive, funnel-shaped, deep gentian-blue flowers that supply that touch of blue so much needed in the flower-garden and which is so rare in perennials. 1 ft. April, May. 50 cts. each, \$4.50 for 10.

SALVIA nemorosa (Virgata nemorosa). *Violet Sage.* An effective border plant with dark blue flowers. 2 ft. May, June. 50 cts. each, \$4.50 for 10.

S. nemorosa alba. A white form of the above variety. 50 cts. each, \$4.50 for 10.

SAXIFRAGA decipiens bathoniensis alba. Belongs to the mossy type of *Saxifraga*, forming green tufts with big, white, cup-shaped flowers. Very floriferous. 2 to 3 in. May, June. 50 cts. each, \$4.50 for 10.

S. umbrosa. *London Pride.* Fine for the rock-garden and edgings in half-shady places. Pinkish white flowers in May and June. 6 to 8 in. 50 cts. each, \$4.50 for 10.

SEDUM Nevi. *Stonecrop.* Forms somewhat small greenish red rosettes similar to *sempervivums*. A very unusual variety. 50 cts. each, \$4.50 for 10.

SEMPERVIVUM. *Houseleek.* Among the best plants for the rock-garden. They grow well in a dry location and do not require very rich soil. The fleshy leaves form rosettes of gray-green and sometimes brownish red. Flowering stems about 4 to 8 inches high rise from the center of the rosettes. July, Aug. We can offer the following varieties:

S. arenarium. Elegant little green rosettes.

S. arachnoideum. *Cobweb Houseleek.* Tips of leaves in rosettes usually connected by silvery threads, from whence its common name. Flowers bright red, in a few-flowered panicle. 6 in.

S. arachnoideum Gnaphalium. Pink flowers.

S. Brauni. Very distinct, with dark green foliage tipped brown. Flowers red. Of great value in the rockery.

S. Doellianum. Small, hairy rosettes of pale green leaves. Stems 4 to 6 inches high, with bright red flowers.

S. Fauconetti. Small rosettes with very small leaves and red flowers on 4 to 6-inch stems.

S. fimbriatum. Leaves tipped with a tuft of hairs; flowers bright red, in an open panicle on stems 6 to 10 inches high.

S. glaucum (acuminatum). Glaucous rosettes with slightly reddish brown tip.

Sempervivum globiferum. Rosettes rather flattened; leaves gray-green; flowers pale yellow, densely short-hairy. 1 ft.

S. hirtum (cornutum). Elegant, pale green rosettes.

S. La Harpei. Rosettes and leaves pointed and larger than *Fauconetti*. Flowers yellow. 8 in.

S. Mettenianum. Rosettes flat, gray-green marbled with grass-green, tip red-brown. Rose-pink flowers.

S. Pomeli. Leaves with brown-red tips.

S. soboliferum. *Houseleek.* Rosettes of pale light green leaves, with the outer ones tinted red-brown, especially on the back.

S. tectorum. Broad rosettes of leaves having reddish brown tips. Flowers pale red. 1 ft.

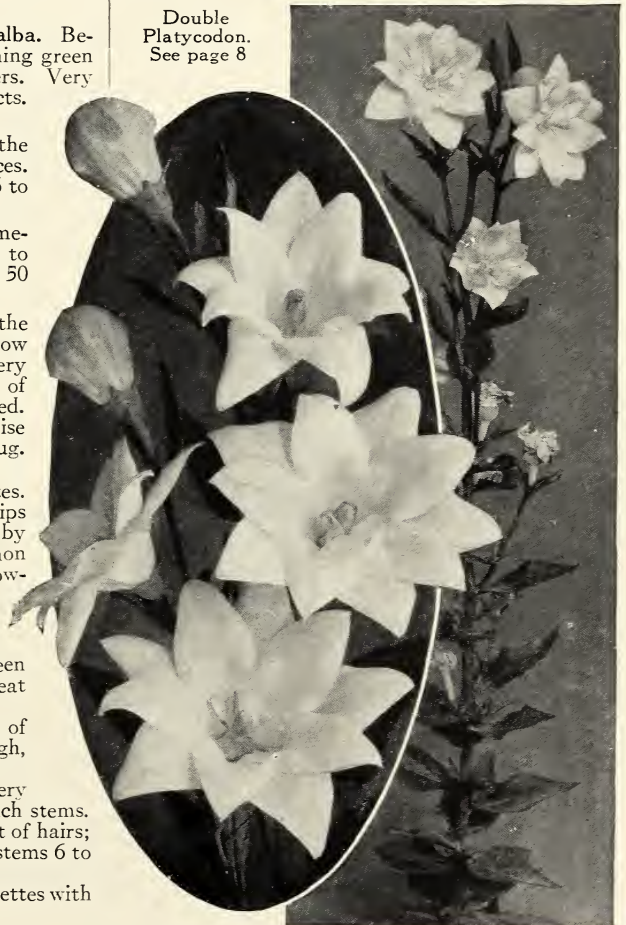
S. tectorum violaceum. A form of *Tectorum* with bluish lavender rosettes.

All *Sempervivums*, \$2 for 10, \$18 per 100

SIDALCEA. *Prairie Mallow.* This beautiful perennial is not known well enough. It forms bushes about 2 to 3 feet high, producing fine spikes of good-sized flowers in July and August. Beautiful in the border and excellent as a cut-flower. We can offer the following new varieties:

S., Monarch. Spikes of large, rich rosy crimson, semi-double flowers in August. 75 cts. each, \$7 for 10.

Double
Platycodon.
See page 8





Sidalcea, Mr. Lindberg. An excellent variety with dark ruby-red flowers coming somewhat later than the Nimmerdor variety. 75 cts. each, \$7 for 10.

S., Nimmerdor. Fine saucer-shaped flowers of delicate salmon-rose. 75 cts. each, \$7 for 10.

S., Scarlet Beauty. A rare and beautiful plant that produces deep, amaranth-pink flower-spikes in abundance. 75 cts. each, \$7 for 10.

SILENE maritima flore-pleno. *Double Sea Catchfly.* A wonderful plant for the rock-garden. It is dwarf, creeping, with big, white, double flowers nearly as large as a carnation. 6 in. Aug. 50 cts. each, \$4.50 for 10, \$40 per 100.

THALICTRUM diptero-carpum album. *Yunnan Meadowrue.* One of the handsomest Thalictrums. Produces graceful sprays with branches of small, dainty, pure white flowers. 4 ft. Aug., Sept. 50 cts. each, \$4.50 for 10.

Trollius · Globe Flower

Beautiful, hardy border plants, with handsome, dark green foliage and showy yellow flowers from May to July. They are well adapted for half-shady or sunny positions, are fine for moist places and edges of water-gardens, and also do well in good garden soil which does not lack moisture. Perfectly hardy if protected during the winter with a covering of leaves. As a group they are extremely handsome, and always attract the admiration of all who know them.

Trollius asiaticus, Canary Bird. Pale yellow globes on erect, robust stems. Fine for cut-flowers. 1½ ft. April, May.

T. asiaticus, Earliest of All. Early, free-flowering; light orange-yellow variety. Blooms before other varieties. 1½ ft. April, May.

T. europæus. *European Globe Flower.* Large, lemon-colored, buttercup-like flowers, 1 to 1½ inches across, on long stems. Should be planted in moist soil. This is the common old-fashioned popular variety. 2 ft. May, June.

T. europæus, His Majesty. Very large, round, pure orange-yellow flowers. Plant vigorous and more floriferous than the original or common variety. 1 to 2 ft. May, June.

T. europæus, Lichtball. Extra-large, globe-shaped, orange-yellow flowers on stiff stems. 20 to 24 in. May, June.

T. europæus, Orange Princess. Extra-deep orange flowers in profusion. 2 ft. May, June.

T. Ledebouri. Large, orange-yellow flowers until the end of June. Probably the best known of the improved varieties. 3 to 4 ft.

All Trollius, 50 cts. each, \$4.50 for 10

Latest Novelties

TROLLIUS asiaticus fl. croceo. One of the very finest dark orange shades. 2 ft.

T., First Lanciers. Strong, vigorous plants with large flowers of deep orange. Very early. 2 ft.

T., Goliath. Brilliant dark orange. Very tall with giant flowers. 2 ft.

T., Herbert Asquith. Fiery orange flowers, produced very early. Plant large and strong. 2 ft.

All Latest Novelties, 75 cts. each, \$7 for 10

TRITOMA, Royal Standard. *Torch Lily.* A distinct novelty with strong spikes of flowers having the lower half bright yellow and the upper part a rich scarlet. A very good grower and free bloomer. 2 to 2½ ft. June-Oct. \$1 each, \$9 for 10

Veronica · Speedwell

These Veronics are most graceful and beautiful plants for rock-gardens. They grow very easily, producing flowers in great profusion, and are therefore most effective for color in the rockery.

The following are varieties of *V. Teucrium rupestris*. All make a dense mat of foliage from which the slender spikes of flowers rise a few inches in great profusion.

Veronica Teucrium rupestris alba. White. 4 in. May, June. 50 cts. each, \$4.50 for 10.

V. Teucrium rupestris, Heavenly Blue. Blooms earlier than the others. A very striking variety, with masses of exquisite rich blue flowers. 4 in. 50 cts. each, \$4.50 for 10.

V. Teucrium rupestris rosea. Pink. 4 in. May, June.

V. Teucrium, True Blue. A new blue variety. 10 to 12 in. July, Aug.

All Veronics, 35c. each, \$3 for 10, \$25 per 100, except where noted.

VINCA minor alba. *White Periwinkle.* This variety of Vinca is just like the well-known blue-flowering Periwinkle, except that it has white flowers. It is very attractive when used as a ground-cover in groups between the blue-flowering variety. 35 cts. each, \$3 for 10, \$25 per 100.



Tritoma, Royal Standard

Roses
By Bobbink & Atkins

The new 1930 edition is ready for mailing to those who are interested in planting Roses.



Effect obtained by planting B. & A. Evergreens

Choice and Rare Evergreens

Home-grounds are incomplete without the use of Evergreens. Unfortunately, there is too much sameness in most plantings, but this can be very much improved by the use of such varieties as we are listing below. Of course, we do have many other varieties, which we list in our special Catalogue of Evergreens, Trees, Shrubs, Azaleas, Rhododendrons, and Vines.

CRYPTOMERIA japonica Lobbi. *Lobb Cryptomeria.* An interesting evergreen novelty from China and Japan, where it is often used for avenue or driveway planting. It is of slender habit with deep green leaves that assume a stiff prickly habit and seem to be an outgrowth of the branch, changing to russet in fall. The foliage is arranged fantastically, quite different from most evergreens, and for this reason is a welcomed addition in group planting. 3½ to 4 ft., \$9 each, \$80 for 10.

JUNIPERUS Burki. Of all upright-growing Cedars, this is one of the choicest. Its fine columnar, symmetrical habit, combined with the beauty of its steel-blue foliage, makes it indispensable in better plantings. 3 to 3½ ft., \$6 each.

PICEA glauca conica. *Dwarf Alberta Spruce.* Very rare. A charming, compact, pyramid-shaped evergreen with very dense foliage and of slow growth. Invaluable for formal effects where pyramidal Boxwoods were used heretofore; also fine in its young stage for rock-gardens. 2½ to 3-ft. specimens, \$20 each.

P. pungens Kosteriana. The bluest of Blue Spruces, this is the most remarkable and conspicuous of all the conifers for ornamental planting. Being symmetrical and shapely, its usual purpose is as a specimen when, owing to its magnificent, vivid bluish coloring, it constantly attracts the attention of all lovers of the beautiful. Nevertheless, it works remarkably well in the landscape against a background of the darker varieties which enhance its peculiar silver luster.

	Each
2½ to 3 ft.	\$20 00
3 to 3½ ft.	25 00
3½ to 4 ft.	30 00
4 to 4½ ft.	35 00

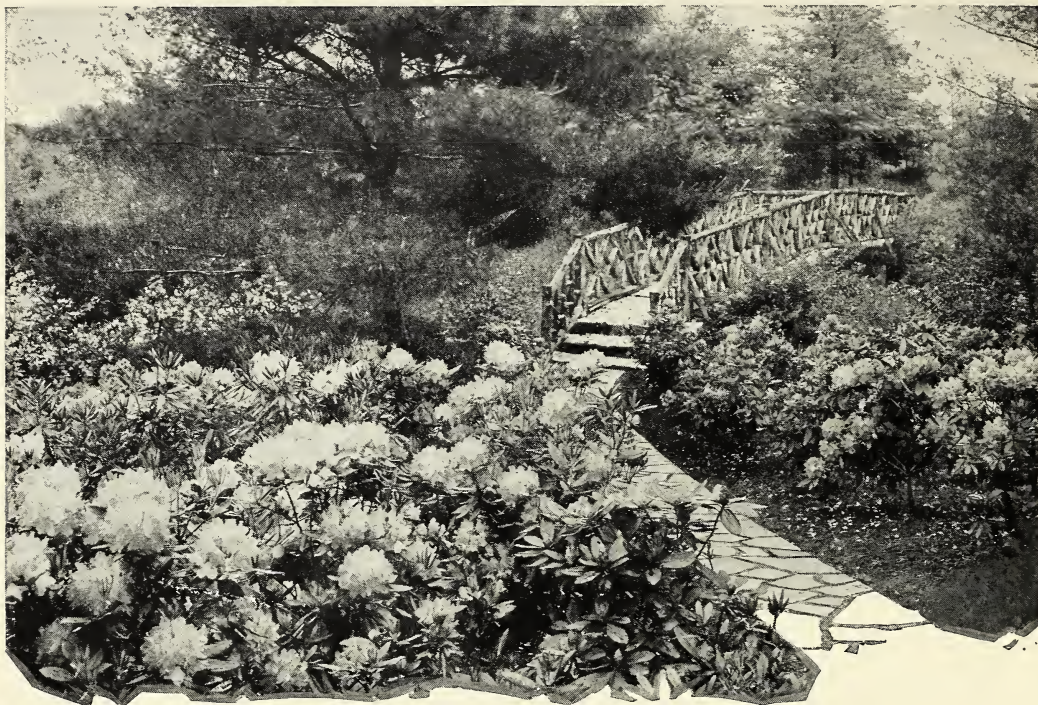
TAXUS cuspidata. *Spreading Japanese Yew.* An extremely hardy spreading form which grows more or less fan-shaped, but, if desired, can also be grown in a compact, globose form by shearing the plant occasionally in its younger stage. The foliage is dark green above, and the under side of each needle is dull light green. Undoubtedly, this is one of the most valuable additions to the American garden, and full of character.

	Each	10
2 to 2½-ft. diam.	\$6 50	\$60 00
2½ to 3-ft. diam.	9 00	
3 to 3½-ft. diam.	12 50	
5 to 6-ft. diam., specimens.	50 00	
6 to 8-ft. diam., specimens.	75 00	

T. cuspidata capitata. *Erect Japanese Yew.* Of all the Yews this is the only hardy upright-growing variety in the northern states. It is a fast grower, standing our most severe winters and keeping its beautiful dark green color throughout the year. It cannot be equaled for color and hardiness as a hedge plant nor for its beauty in group plantings. By shearing this plant occasionally, it will attain the pyramidal shape often seen in boxwoods. We offer bushy, compact specimens, trimmed several times.

	Each	10
2 to 2½ ft.	\$7 50	\$65 00
2½ to 3 ft.	10 00	90 00
3 to 3½ ft.	12 50	

TSUGA canadensis pendula (*T. canadensis Sargentii pendula*). One of the choicest and most beautiful evergreens of permanent weeping habit. It is of compact, moderate growth, with graceful, spray-like branches, and leaves more or less glaucous beneath. Rare, and exceptionally fine if grown as a specimen plant or in large groups. 2 to 2½ ft., \$7 each.



Hardy Broad-leaved Flowering Evergreens

Rhododendrons

Rhododendrons are the handsomest of the broad-leaved evergreens. They are also the easiest to grow and very useful because they solve the great problem of what to plant in shady positions caused by overhanging tree branches, or by the house facing north or east, so that the planting space does not receive sufficient sun to grow evergreens or shrubs. The soil should be a light garden loam, and if this is not available it can be made by adding leaf-mold or peat moss, which also supply the desired acidity for the plants. More detailed instructions in our Evergreen Catalogue.

It is difficult to have a complete assortment during the entire year, as certain sizes and colors are sold much more quickly than others. For this reason we keep a special up-to-date list of what we have to offer in named varieties and colors ranging from white to bluish, pink to red or lavender shades in sizes and prices as follows:

	Each	10
15 in.....	\$4 50	\$40 00
1½ ft.....	6 00	55 00
2 ft.....	7 50	65 00

In addition to these Hybrids, we have large quantities of Native Rhododendrons in the following varieties:

Rhododendron catawbiense. *Catawba Rhododendron.*

R. carolinianum. *Carolina Rhododendron.*

R. carolinianum album. *White Carolina Rhododendron.*

R. maximum. *Great Laurel.*

Hardy Evergreen Azaleas

The following varieties of Azaleas (lately classified under Rhododendrons) are generally known as Japanese Azaleas, and owe their origin largely to China and Japan.

Unfortunately, a greater use of these Azaleas to enliven shrubbery plantings or for massing to assure brilliant color effects on account of their flowers in spring and the beautiful autumn coloring of the foliage has been generally overlooked in the past.

In the smaller rock-gardens, these Azaleas should be used mainly for background effects and massing, while in the larger and more pretentious ones they will be suitable most anywhere.

We urge our patrons to become better acquainted with these interesting groups of Azaleas. For cultural directions, we refer you to our illustrated Evergreen Catalogue.

Kinds marked with an asterisk (*) need special protection in our northern states.

While we are listing mainly prices and sizes of specimen plants, our Catalogue lists also smaller sizes at very reasonable prices ranging from \$2.50 to \$5 each.

AZALEA amcena. Bright rosy purple flowers are produced in a solid mass in May. The hairy foliage assumes a bronze tint in the fall and winter months. 21 to 24-in. diam., specimens, \$13 each.

A. Benigiri. Leaves evergreen, rather narrow and slightly concave; nice, compact habit. Flower deep bright red, almost scarlet. 21 to 24-in. diam., specimens, \$14 each.



Azalea mollis

**Azalea Hinomayo*. New introduction of great merit. Resembles *Hinodegiri* in habit and general outline, but the foliage is a little smaller. It blooms about the same time and the flowers are a wonderfully clear soft shade of pink. Almost evergreen. 22 to 24-in. diam., specimens, \$14 each.

A. Hinodegiri. A bright scarlet form of the well-known and charming *A. amana*, but far surpassing it in brilliancy and beauty. It is a profuse bloomer with round, evergreen foliage. 22 to 24-in. diam., specimens, \$14 each.

A. indica alba (ledifolia alba). A luxuriant, upright, spreading grower and profuse bloomer. 28 to 36-in. diam., specimens, \$15 each.

A. Kaempferi. Large, beautiful fiery salmon flowers with reddish sheen. Being absolutely hardy, it is a fine variety for our climate. It grows tall and bushy, and is excellent as specimens as well as in shrubby plantings. 18 to 24 in. high, \$4 each.

A. macrantha fl.-pl. Large, double, salmon-red blooms resembling *Hinodegiri*. A very compact, flat, quick grower with dark green, glossy foliage. Blooms in June. One of the hardiest of *Azaleas*. 24 to 30-in. diam., specimens, \$15 each.

Deciduous Azaleas

The following varieties are of a taller-growing nature and for this reason mainly used amongst shrubby plantings.

AZALEA mollis. *Chinese Azalea.* Notable for the variety and delicacy of its numerous shades of yellow, terra-cotta, apricot, and golden salmon flowers. Quite hardy in this latitude, and thrives under ordinary garden treatment, but best in a partially shaded, protected spot. Useful for undergrowth among tall trees or as a border for large shrubberies. Blooms in April and May.

	Each	10
12 to 15 in.	\$2 50	\$22 50
18 to 24 in.	4 50	40 00
2 to 2½-ft. specimens.	7 50	70 00

A. mucronulatum (longistylum). A very early-flowering *Chinese Azalea* which unfolds its blossoms at the time that the *forsythia*, or golden bells, is in bloom, and with which, by the way, it forms a wonderful color contrast. The flowers are of a lavender and soft pink tone. This extremely hardy shrub grows eventually to a height of 5 to 6 feet.

	Each	10
2½ to 3 ft.	\$7 50	\$65 00
3 to 3½ ft.	10 00	

Azalea pontica

SPECIMEN PLANTS

These, the Hardy Ghent *Azaleas*, have always been popular but are not used in mass enough for home-owners to appreciate their wonderful beauty. The lustrous leaves are covered with silky hair when young, and in autumn turn to dull red and brown. In association with *rhododendrons*, they make a fine effect, and for best results they should be treated similarly. We have at present a unique and rare collection of specimen plants in many varieties. Ask for special list of varieties and prices.

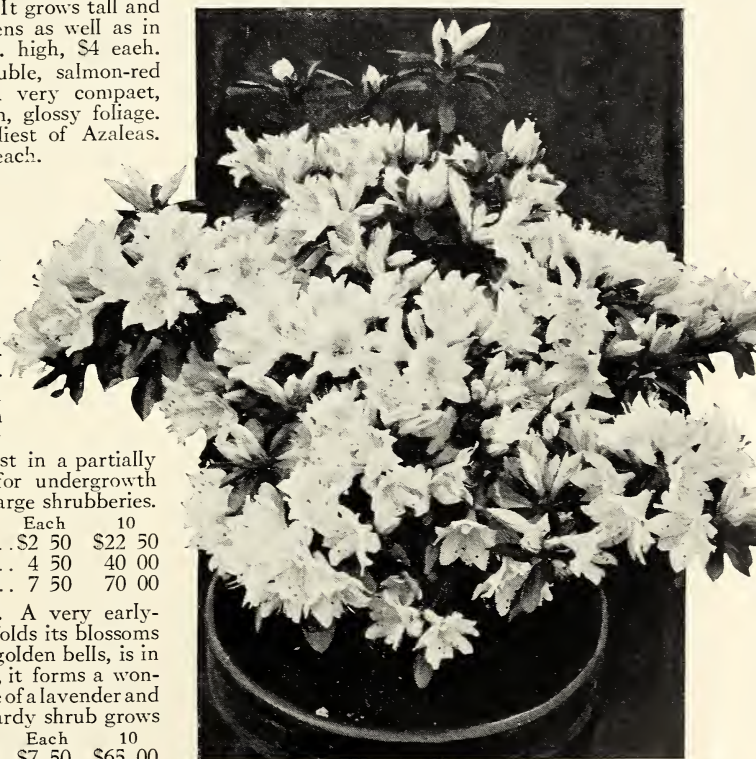
Japanese Kurume Azaleas

FOR OUTDOORS AND FORCING

These *Azaleas* were originally imported into California from the city of Kurume, on the Island of Kyashu, Japan, where they were discovered by Dr. E. H. Wilson, of the Arnold Arboretum. From California, they found their way east, where a few progressive nurserymen saw their possibilities and at once started propagation. Although not exactly new, they are still scarce.

For garden planting there is nothing to equal their usefulness when placed among broad-leaved evergreens, such as *kalmias*, *rhododendrons*, etc., being naturally protected in this manner.

For a list of varieties, sizes, and prices we refer you to our *Evergreen Catalogue*.



Japanese Kurume Azalea



Hardy Flowering Evergreen Shrubs

Most of the following beautiful shrubs are too little known. By using these in new as well as older plantings, entirely new effects will be created.

BERBERIS Julianaë. This beautiful and rare evergreen variety, hardly known, is one of the best and hardiest of our broad-leaved evergreen shrubs. It stays perfectly green during the winter and blends well with plantings of rhododendrons, kalmias, andromedas, and evergreens in general. To plant-lovers who always are looking for "something better," we recommend it very highly. Strong, field-grown plants, 15 to 18 in., \$1.25 each, \$10 for 10.

COTONEASTER horizontalis. *Rock Cotoneaster.* Curious, dwarf shrub of trailing habit, fine for rockeries. It is covered with brilliant red berries in autumn and winter. The foliage turns to soft tints of red and bronze before falling. Pot-grown plants, 9 to 12-in. diam., \$1 each, \$8.50 for 10, \$75 per 100.

PYRACANTHA. *Firethorn.* Beautiful evergreen shrubs which are listed in a special pamphlet which will be gladly sent upon application. Prices and sizes are also given in our Evergreen Catalogue.

Japanese Maples

Acer japonicum and palmatum

These dwarf Maples are extremely useful in landscape schemes for their wonderful coloring and fascinating habit. The foliage of the various species is widely different, some being so delicately cut as

to be a mere network, and in color they range from vivid fresh green to deep purplish red. Planted separately, they develop into magnificent specimens, and beautiful effects can be obtained by grouping them, but the best situations are as accents in a shrubbery or tree border. They are peculiarly effective when placed so they may be glimpsed through openings in a planting of gray-green coniferous evergreens.

ACER japonicum aureum. *Golden Moon Maple.* Foliage shaded in gold, with suffusions of green. Contrasts most beautifully with the darker shades of green in the shrubbery planting. 4 to 5 ft., \$12.50 each.

A. palmatum (polymorphum). *Japanese Maple.* Has small, star-shaped leaves which in autumn gradually assume a bronzy red tint, beginning at the edges. Grows a little taller than *A. japonicum*, with a picturesque habit. Young shoots are bright red. 4 to 5 ft., \$4 each, \$35 for 10.

Broadleaf Japanese Maple

Acer palmatum atropurpureum

A very conspicuous, medium-sized bush or tree with blood-red foliage, and a wonderful addition to the lawn, either as a specimen plant or in shrubbery groups. Pot-grown or field-grown plants, 2 to 2½ ft., \$8 each, \$70 for 10.

Ornamental and Flowering Trees and Shrubs

CORNUS florida rubra. *Red-flowering Dogwood.* Like the white variety, it is a shrub or sometimes a small tree with wavy foliage, glaucous underneath. On account of its pinkish red flowers, it is indeed a real acquisition for specimen planting or in groups. 5 to 6 ft., \$12.50 each.



Cornus florida rubra

Magnolias

A lawn is not complete without Magnolias

The snow has hardly given way to the first rays of the March sun when the Magnolias unfold their delicate and lovely vari-colored blossoms, giving us the first taste of real spring.

Nothing is more fascinating than a Magnolia in full bloom, before the rest of the landscape really awakens. *Magnolia stellata*, the earliest to bloom, unfolds its silvery, star-shaped, naked blossoms in late March, sometimes before the foliage appears. The large-flowering Chinese varieties follow *Stellata*. Of these, *Conspicua*, *Soulangeana*, *Alba superba*, and *Soulangeana Alexandrina* begin to bloom when *Stellata* is passing. By the time this last group has spent its beauty, *Soulangeana Lennei* and *Soulangeana nigra* take up the task of prolonging the display.

By careful selection, Magnolias can be had in flower from the end of March to July.

Magnolias are best planted in the open lawn. Nothing is more striking against a background of dark green conifers. They thrive best in somewhat rich, moderately moist, but porous soil. *Magnolia glauca* will do best in low or swampy places.

For varieties and prices, we refer to our Evergreen Catalogue.

LABURNUM vulgare Vossi. *Golden Chain.* A dwarf tree or shrub which should be grown more extensively in the less severe climates. This variety is hardier than the common variety, and has much larger racemes of yellow flowers. When seen in bloom it is a sight never to be forgotten. 6 to 7 ft., \$6 each.



Japanese Flowering Cherries (Prunus)

Japanese Flowering Cherries

BUSH AND TREE FORM

Japan is famous throughout the world as "The Land of Cherry-Blossoms." For centuries the Japanese have loved the pink and white flowers of the Cherries and have patiently worked with them until the species and varieties are so numerous that different sorts bloom over a period of at least five weeks.

Early in April, the single-flowering varieties are the first trees to blossom. The miraculous beauty of their flowers, coming so soon after winter has passed, makes a vision of delicate and ethereal beauty. When the single sorts are passing, the double varieties begin to flower. They range in color from very dark pink to pure white.

Thousands and thousands of people journey to Washington, D. C., every spring to admire the wonderful display of Cherry-blossoms along the Potomac Basin, where are planted several hundred Cherry trees presented to the United States by the Japanese Government. A similar display may be seen near the Soldiers' Monument on Riverside Drive, New York City.

All Japanese Cherries are hardy and will grow well in almost any location, even in very shallow soils. They make splendid specimens for individual planting on the lawn, and the stronger-growing sorts are suitable for avenue trees. It must be noted that these are quite different in habit from the Weeping Japanese Cherry offered, their ultimate development being bush or tree form, and not the weeping type.

A special list of varieties, sizes, and prices will be sent upon request

WEeping JAPANESE CHERRIES

PRUNUS rosea pendula (Shidare-Higan; *P. subhirtella pendula*). *Weeping Japanese Cherry*. This is, no doubt, one of the most beloved Japanese Cherries. As a lawn tree, it can hardly be excelled. The weeping, slender branches are covered with a multitude of light pink flowers which appear long before any of the other Japanese Cherries come in bloom.

Splendid, sturdy trees with well-formed, 1-yr. heads, \$6 each; 2-yr. heads, \$10 each. Larger, older trees which will make a quicker show, 4-yr. heads, \$20 each. Prices include packing.

AMYGDALUS persica albo-plena. *Double White-flowering Peach*. The dainty white blossoms make this variety very attractive in border plantings. 6 to 8-ft. specimens, \$7.50 each.

CRATÆGUS Pauli. *Paul's Scarlet Thorn*. Double, rich, brilliant, scarlet flowers. Best of all the Hawthorns. Can be grown in a very interesting tree form and often planted as specimen plants. 5 to 6 ft., \$3.75 each, \$35 for 10.

Our Evergreen Catalogue lists an interesting collection of the Hawthorn family which are used for hedges, in shrubbery groups, or sometimes in small tree forms.

KOLKWITZIA amabilis. *Beauty Bush*. A new introduction from China. Closely related to abelia, but perfectly hardy, even in Massachusetts. In early June it is a mass of arching sprays of pale pink, tubular flowers which are somewhat deeper in the bud. The individual blossoms are almost an inch long and $\frac{3}{4}$ inch in diameter. When matured, it probably will reach a height of 7 to 9 feet. The common name of Beauty Bush was suggested on account of the unusual charm and beauty of this plant. Pot-grown plants, 1 to 1½ ft., \$1.50 each, \$13.50 for 10.

Hybrid Lilacs

Without doubt, one of the most popular spring flowers, not only in the garden but also for cutting. The sweet fragrance of the Lilacs permeates the air, and the beautiful flowers seem to have reached the ultimate of delicate and refined color.

The Lilacs are extensively used, singly as well as in masses on the lawn, and when massed, the effect produced readily establishes the great value of these plants. They may be used also in the shrub borders, for screening, and, in fact, for almost any purpose where heavy, luxuriant foliage and large shrubs can be used.

We carry an excellent collection of Hybrid Lilacs in stock—about 110 varieties, in various sizes from 2 to 6 feet. As it is very difficult to list all of these in this catalogue, for the reason that in a short time many varieties may be sold out, we issue a special list which is kept up-to-date from week to week.

Our special list of Hybrid Lilacs will be mailed upon application.

Malus

Flowering Crab-Apples

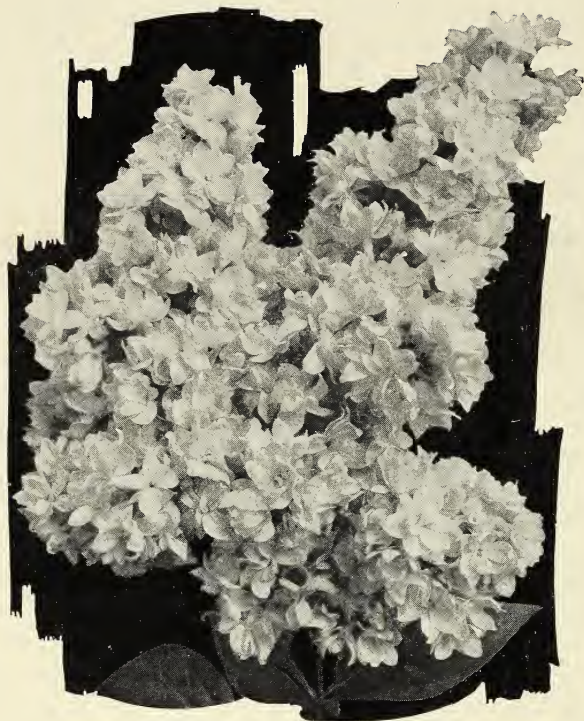
The Flowering Crab-Apples are bushy shrubs or small trees with flowers of deep carmine varying to the most delicate pink and white. In the fall, the conspicuous red or yellow fruits, interspersed through the charming green foliage, are equally attractive. These fruits, as they reach maturity, are keenly relished by birds. There is no better way to attract these feathered friends than by planting Crab-Apples to provide them winter food.

For sizes and prices, we refer to our Evergreen Catalogue; or ask for our special list

Zenobia pulverulenta

Andromeda speciosa; Zephyr Lily

A low bush with graceful, spreading, drooping branches, having white waxy-like flowers in clusters in early June. Bluish green foliage. 1 to 1½ ft., \$2.50 each, \$20 for 10.



Viburnum carlesi

A valuable addition to the Viburnum family. Its round heads of white flowers, faintly tinted rose at first, possess a delightful fragrance. Foliage channeled; clear brown bark. Has nice, bushy habit and flowers freely when established. New and rare.

	Each	10
Field-grown plants, 12 to 15 in..	\$1 75	\$16 00

Extra-Fine, Bushy Specimens

	Each	
3 to 3½ ft	\$10 00	
3½ to 4 ft	12 50	
4 to 5 ft	15 00	

Hardy Vines

Hardy Vines and Climbers do much toward beautifying a home by covering banks and bare spots, and giving comfortable shade and pleasing fragrance to the pergola and veranda. There is a wide diversity of types, so that vines may be selected to harmonize with all surroundings. A complete list will be found in our Evergreen Catalogue, but we call particular attention to:

Ampelopsis tricuspidata Lowi, Clematis hybrids such as Jackmani, Henryi, Mme. Baron Veillard, and Mme. Edouard Andre, and *Polygonum Auberti*.

WISTERIA. Few of the hardy climbers are more showy in bloom than the Wisteria. The plants offered here are all grafted stock, scions having been taken from old blooming plants, and cannot be compared with plants grown from seed, which take years to bloom. Besides the varieties mentioned here, we carry several others which can be found described and priced in our Evergreen Catalogue.

W. multijuga (*W. macrobotrys*). *Japanese Loose-clustered Wisteria.* A rare species with purplish or lilac-colored flowers borne in immense clusters, sometimes 2 feet in length. Field-grown, 5-yr. plants, \$4.50 each, \$40 for 10.

W. multijuga alba (*W. macrobotrys alba*). Very rare; large clusters of white flowers. Field-grown, 5-yr. plants, \$4.50 each, \$40 for 10.

A new 1930 edition of *Roses*, by Bobbink & Atkins, offers a complete list of the finest modern varieties. We will be glad to send a copy to those interested in growing Roses

BOBBINK & ATKINS

Rutherford, New Jersey